



**The Methodist Church**  
**Blackheath and Crystal Palace Circuit**  
**Quarterly Newsletter**

Issue 51

December 2024

**Superintendent Minister's Letter**

Dear friends,

**Advent 2024: 'Roadbuilding'**

John the Baptist went all over the Jordan valley proclaiming baptism in token of repentance for the forgiveness of sins. 'A voice cries in the wilderness 'Prepare the way of the Lord' (Luke 3:3 & 4). Roadbuilding is rough, heavy work involving a lot of digging, excavating, and levelling, especially where the land is hilly, unlevel or rocky, or the soil is in poor condition. Thorough preparation is essential before the hardcore and tarmac can be laid. Failure to get the preparation right can be disastrous. A road that hasn't been laid correctly will soon begin to break up and require urgent repair. John the Baptist, quoting the Prophet Isaiah in the above Bible passage, likens the preparations God requires of his people, ahead of the arrival of the Messiah, to road building. Just as the diligent engineer needs to carefully prepare the land before a new road can be built, so we the people of God need to prepare our lives carefully in this season of Advent ahead of the arrival of our Lord Jesus Christ at Christmastime.

So, in this season of Advent, we need to clear out all those obstacles that can hinder our Lord's arrival. Clear out the arrogance, pride, selfishness and greed of lives that are controlled by the material gods of our world, and open ourselves to the ways of the living God. We need to open ourselves to his love, his grace and his focus away from our own selfish needs and towards the homeless, the foreigner, the lost, the sick and the elderly in our world. Only when we open ourselves to God's grace in this way, will we be ready to truly embrace the Good News, which is the birth of Jesus Christ, God made human, that helpless child in the Bethlehem manger who comes to bring light and life and hope to our world. The Good news is that this work doesn't require shovels, spades, excavators or tractors. We need an openness of spirit, a willingness to wait upon God in worship, prayer and service. So, I invite you to take part in our circuit Advent Bible study 'Preparing the way' as we draw closer to God in this season of watching and waiting.

(STF 183 verses 1 & 3):

*Praise to the God who clears the way  
preparing room and space;  
for power and pride will loose their sway  
and peace comes in their place.*

*Praise to the God who waits with us  
for hope and joy to reign  
who shares our suffering and our loss,  
embodies in our pain.*

May the good Lord go with you all this Advent season and for evermore,

*Richard*

**Anerley Burnt Ash Eltham Park Forest Hill Hither Green  
Lewisham Sunfields Upper Norwood Wesley Hall**

## **Blackheath and Crystal Palace Circuit Advent Bible Study 2024**

Following on from well supported Circuit Advent Bible studies of the past, using the Zoom platform, the circuit staff team has decided to jointly deliver another study this year. We are using material based on the readings for Year C of the Revised Common Lectionary, which will complement the lectionary readings for the intervening Sunday services. This year's study was written by the Preacher, poet and writer, John Birch. Some of you may remember that we used John's material in a previous Advent course in 2022 entitled 'Hark the Glad Sound!'.

'Preparing the Way' is a four-week study. We will be meeting every Wednesday evening at 7.30pm by zoom. Everyone is welcome to any, or all, of these sessions:

**Wed. 27<sup>th</sup> Nov:** Study 1 'A World in Turmoil' led by Rev. Richard Grocott

**Wed. 4<sup>th</sup> Dec:** Study 2 'Preparing the Road' led by Rev. Charles ILunga

**Wed. 11<sup>th</sup> Dec:** Study 3 'The Life Required' led by Rev. William Davis

**Wed. 18<sup>th</sup> Dec:** Study 4 'God's Servants' led by Rev. Craig Gaffney

We do hope that as many people as possible from across the circuit are able to join us and enjoy both the study and the cross-circuit fellowship of friends. It will be an interactive study in which we encourage all who are able participate to be involved in the discussions. Please find below details of the recurring zoom link you would need to access this study: <https://zoom.us/j/95528625534?pwd=0bb3FJwYw8I528ice8O2C6gK5cteLC.1>



### **IN PERSON ADVENT COURSES AROUND THE CIRCUIT**

**Burnt Ash:** 'Woven Advent Course' running for 4 weeks from 27<sup>th</sup> November 2024  
Wednesday mornings 10.15-11am, led by Rev. Craig Gaffney

**Hither Green:** 'Hush the noise: join the love song this Christmas'\* advent study on  
Tuesday 17th December at 7pm led by Rev. Craig Gaffney

**Sunfields:** 'Hush the noise: join the love song this Christmas'\* Advent study sessions  
for 3 weeks from 5<sup>th</sup> December 2024 on Thursday evenings at 7.30pm, led by  
Rev. Craig Gaffney

\* Methodist annual Christmas campaign.

**Anerley Burnt Ash Eltham Park Forest Hill Hither Green  
Lewisham Sunfields Upper Norwood Wesley Hall**




**Pub Christmas**  
**CAROLS**

**JOIN US FOR A FESTIVE SINGALONG**  
**ELTHAM GPO**  
**PASSEY PLACE SE9 5DQ**  
**FRIDAY 20TH DECEMBER 6PM**

**Eltham Churches**  
Donations for The Greenwich Homeless Project



**Outdoor**  
**Community**  
**Singing**  
**Saturday 21<sup>st</sup>**  
**December**  
**4.30-5.30pm**  
**Hither Green**  
**Methodist Church**



**Burnt Ash Methodist Church**  
Proudly presents...

**‘CAROLS AT THE CROWN’**

**Monday 23<sup>rd</sup> December - 7:30pm**  
**The Crown Tavern - 117 Burnt Ash Hill**

Grab your families and friends and join us for an evening of community festive cheer in the garden of The Crown Tavern.

Donations for Action for Children

**Anerley Burnt Ash Eltham Park Forest Hill Hither Green**  
**Lewisham Sunfields Upper Norwood Wesley Hall**

**BLUE CHRISTMAS SERVICE**  
**AT HITHER GREEN METHODIST CHURCH**  
**ON SUNDAY 22<sup>ND</sup> DECEMBER AT 5PM,**  
**LED BY REV. CRAIG GAFFNEY**



**A SERVICE OF REFLECTION – HONOURING FEELINGS OF LOSS,  
SADNESS AND LONLINESS THIS CHRISTMAS**

A Blue Christmas service is a reflective service held during Advent to acknowledge the difficulties of life and to offer hope and healing to those who are experiencing grief or loss.

Also known as ‘The Service of the Longest Night’, this service provides an opportunity for the difficulties of life to be acknowledged in contrast to the celebration atmosphere of most Christmas events.

*This service is open to all.*

Light looked down and beheld Darkness.  
Thither will I go, said Light  
Peace looked down and beheld War,  
Thither will I go, said Peace  
Love looked down and beheld Hatred,  
Thither will I go, said Love  
So Light came and shone,  
So Peace came and gave rest,  
So came Love and brought life.  
And the Word was made flesh, and dwelt among us.

*(Laurence Housman 1865-1959)*

**Anerley Burnt Ash Eltham Park Forest Hill Hither Green  
Lewisham Sunfields Upper Norwood Wesley Hall**

## Covenant Services around the Circuit



### 5<sup>th</sup> January 2025

- 10.30am Hither Green led by Rev. Craig Gaffney
- 10.30am Lewisham led by Rev. Richard Grocott
- 11am Wesley Hall led by Rev. Charles ILunga

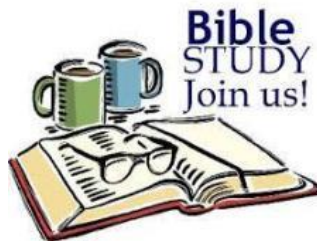
### 12<sup>th</sup> January 2025

- 10.30am Burnt Ash led by Rev. Craig Gaffney
- 10.30am Eltham Park led by Rev. Richard Grocott
- 11am Forest Hill led by Rev. Charles ILunga
- 11am Upper Norwood led by Rev. William Davis

### 19<sup>th</sup> January 2025

- 11am Anerley led by Rev. William Davis

## Blackheath & Crystal Palace Circuit



### Weekly Thursday Morning zoom Bible Study Finding 'The Way' together

Thursday mornings 10.00am to 11.00am facilitated by Margaret Boreham

The zoom opens at 9.45am with the study beginning at 10am. Conversations are based on a Bible passage and there will be questions to make us think and rethink. There is an opportunity and time to share thoughts and questions. Closing remarks are at 11am for those who want just an hour, but stay open after 11am for anyone keen to chat or continue the conversations sparked by the Bible Study.

Margaret on [mboreham5@gmail.com](mailto:mboreham5@gmail.com), 07483 86 86 12 Recurring zoom link:  
<https://zoom.us/j/98461065032?pwd=NTJFUmJ1WHVubjZwaWVCNzd0MlEvdz09>

**Anerley Burnt Ash Eltham Park Forest Hill Hither Green  
Lewisham Sunfields Upper Norwood Wesley Hall**

**CIRCUIT  
CHRISTMAS  
YOUTH EVENT**

- SUNDAY 15<sup>TH</sup>  
DECEMBER 2024
- 5PM – 7PM
- HITHER GREEN  
METHODIST CHURCH
- 7 – 23 YEAR OLDS  
(UNDER 12 - ACCOMPANIED)
- FAITH – FUN - FOOD



For more information contact Rev. Craig Gaffney: [craig.gaffney@methodist.org.uk](mailto:craig.gaffney@methodist.org.uk)

### **3 Generate: Birmingham NEC 4th-6th October 2024**



3 generate is a place where children and the leaders from all Methodist churches in the UK join together to share the word of God and worship and also participate in different activities, it's a place of conversation laughter and other things.

This year we made a lot of friends because of our confidence in being able to talk to other people. This event mattered a lot to the young people. It was a time to connect with others, share our beliefs, and feel supported. At the closing of the event, we left feeling inspired and ready to carry that sense of togetherness into our lives back home.

One of the highlights was the group worship, where we all gathered to sing and reflect together. It made everyone feel united in a powerful way. Another special part was at the

**Anerley Burnt Ash Eltham Park Forest Hill Hither Green  
Lewisham Sunfields Upper Norwood Wesley Hall**

end, when people shared how much the event had meant to them, which left everyone feeling thankful.

We are grateful to the circuit and everyone who made this trip happen. Their hard work made it possible for us to have this amazing experience, and we couldn't have done it without them

*Hope-Rachel*

Every year I look forward to attending 3Gen in Birmingham. When we arrived, as usual we were sleeping in tents. The whole area is very spacious and near the tents there is even an area to play games like, uno, connect 4 etc. One thing I did enjoy was playing games with new church friends. I feel that 3Gen is important as it brings a community together from across the UK to worship.

I want to thank the circuit for making it possible for us to experience 3Gen once again and I hope we will be able to do it again.

*Joy-Angel*

BLACKHEATH AND CRYSTAL PALACE CIRCUIT  
Mission in Britain Fund Raiser

Mad Hatter's  
Tea Party

With Martin's Trio  
Saturday 22<sup>nd</sup> February

3pm-5pm at Burnt Ash Methodist Church Hall SE12 0QD  
COME AS YOU ARE! PLENTY OF TEA & CAKES & SAVOURIES

**Anerley Burnt Ash Eltham Park Forest Hill Hither Green  
Lewisham Sunfields Upper Norwood Wesley Hall**

## Equality, Diversity and Inclusion training

Saturday 26<sup>th</sup> October 2024 at Forest Hill Methodist Church

The Circuit was delighted to welcome Stuart Watkin back with us to lead the EDI training at Forest Hill in October. The event was attended by 14 members from 5 of our 9 churches, who were able to enjoy a time of fellowship as well as reflection on the various aspects of this interesting course.

**A reminder:** this course is **mandatory** for all those people that have already been contacted by Linda, our Circuit Administrator. If you were not able to attend on the day for the face-to-face session, you should now register for the online course. The Circuit will not be running another in person training session.

The online training needs to be completed as soon as possible, please. Go to:

<https://mcb.theologyx.com/course/equality-diversity-and-inclusion-foundation-module/>

You can either log on and do this in your own time, or you could get together as a group to complete the training, with one person logging on. Please remember to send a copy of your certificate once you have completed the course to Linda [office.bcpc@btinternet.com](mailto:office.bcpc@btinternet.com) . Thank you.



## The 'Way Forward' Group meeting on 19<sup>th</sup> November 2024

The Way Forward Group was initially set up to support the Circuit Leadership Team in connection with the restructuring of the Circuit. As we move into our final Connexional year with four ministers, the emphasis will now be on supporting churches and the Circuit as we make the transition to three ministers. Future meetings (generally held bi-monthly via zoom) will discuss such things as lay worker support, and look at the church Mission Plans to see where additional help/guidance can be offered.

We would welcome new members. If you are interested in finding out more, or joining the Way Forward Group please contact Garry Young: [youngall@btinternet.com](mailto:youngall@btinternet.com) or Linda Ryan [office.bcpc@btinternet.com](mailto:office.bcpc@btinternet.com) for further details.

**Anerley Burnt Ash Eltham Park Forest Hill Hither Green  
Lewisham Sunfields Upper Norwood Wesley Hall**



## **Blackheath and Crystal Palace Circuit**

### **‘Our Circuit, Our Future’**

The following is taken from the Minutes of the Circuit meeting held on Wednesday 25<sup>th</sup> Sept. 2024 concerning the restructuring of the Circuit from 1 September 2024:

‘Dr Garry Young (Senior Circuit Steward) said that opinion had been canvassed widely across the circuit regarding the way forward. The questionnaire distributed in the summer had received 115 responses, and 57 people had attended the ‘Our Circuit, Our Future’ event held at Burnt Ash earlier this month. A few more responses to the questionnaire had since been received but these did not materially alter the findings. The CLT met last week and agreed that the only two viable options were those set out in the ‘Agenda item 12 paper’ which had been distributed to members ahead of this meeting. He reminded us that the need for reorganisation stemmed from the decision to reduce the ministerial staffing from four to three, and was consequent upon both a weakening in the circuit finances and a fall in membership, which could no longer justify us having four ministers. Every church will be affected. Once the choice has been made, we need to work urgently to implement our decision.

Richard then proposed a ‘closed ballot’ which was agreed by more than 2/3rds on a show of hands. He reminded everyone that they were Representatives and not Delegates i.e. should vote in accordance with their own opinion – which may differ from that of their church congregation.

**Result:** 38 votes were cast as follows:

Option 1	22
Option 2	16

Richard announced that Option 1 was carried but he recognised that significant numbers had chosen Option 2. The CLT would try to take these feelings into account as plans moved forward.’

From 1 September 2025, the Circuit will be restructured as follows:

Rev Craig Gaffney:	Burnt Ash	Forest Hill	Hither Green
Rev William Davis:	Anerley	Upper Norwood	Wesley Hall
Rev Charles Ilunga:	Eltham Park	Lewisham	Sunfields

**Anerley Burnt Ash Eltham Park Forest Hill Hither Green**  
**Lewisham Sunfields Upper Norwood Wesley Hall**



## **Wesleyan Friendship Group**

It was a few months ago when Michael and I started chatting about what we perceived to be the need to provide some sort of group meeting for the older members of our congregation to attend during the week. Wesley Hall was becoming a place that was only open on a Sunday for them.

So, on the First Wednesday in August we opened the doors at 2pm and waited to find out how many people would turn up, would it attract many? We had also been in touch with our friends at Forest Hill to advertise the meeting. Well, we needn't have worried, our first meeting attracted 20 people including some from Forest Hill. We ate cakes, drank tea/coffee and chatted. We discussed a name to call our group and what sort of things we hoped to do. We also had 5 children joining us as it was still school holidays for them. The other bonus was that someone who came had originally said that they wouldn't feel comfortable coming to the meeting. They didn't know anyone as they'd only been with us for a couple of weeks, well they came along, enjoyed the fellowship and are still attending!!

We've met twice since then and more people have joined us. We have so far had a varied programme although not regimented but flexible ensuring a time when we can meet together in fellowship. We do open and close with a short Devotional and we have for the last 2 sessions had a short period of armchair type exercises led by Margaret Verrier. We also had a visit from our local Police Beat Officer who gave us a talk about how to keep safe and avoid being scammed. As we go forward, we'll plan more events together and continue the Methodist theme of having tea and cakes and we'll continue the theme of Wesley Hall being "The Church of the Happy Welcome".

It's been a privilege to be part of the setting up of this new group and to further the Ministry of God in Sydenham. We're extremely lucky to have our Minister Charles to attend and support our meetings and this has given him time to meet with us in a less formal setting. However, this has been a joint effort and couldn't have happened without the help from all who have attended from both Churches.

*Sandy Colley*

**Anerley Burnt Ash Eltham Park Forest Hill Hither Green  
Lewisham Sunfields Upper Norwood Wesley Hall**



**DO YOU LIKE A GOOD TUNE?  
THEN WHY NOT COME ALONG TO A CONCERT BY THE  
ELTHAM PARK PLEASANT  
SUNDAY AFTENNOON ORCHESTRA**

**Christmas Carol Concert  
Sunday 15<sup>th</sup> December 2024 at 4pm  
Monthly concerts 25<sup>th</sup> January &  
23<sup>rd</sup> February 2025 at 3.00pm**

**ELTHAM PARK METHODIST CHURCH  
Westmount Road SE9 1XX**

**🎵 LIGHT CLASSICS      SHOW SELECTIONS  
🎵 FAVOURITE HYMNS      POPULAR STANDARDS**  
**ADMISSION FREE      Refreshments available**

**Do you believe this? Week of Prayer for Christian Unity  
Saturday 18 - Saturday 25 January 2025**



The resources for next year's Week of Prayer for Christian Unity are now available to download <https://ctbi.org.uk/resources-for-week-of-prayer-for-christian-unity-2025/> The resources were prepared by the ecumenic community at Bose in Northern Italy. The title 'Do you believe this?' invites us to reflect on the story of Martha's confession

**Anerley   Burnt Ash   Eltham Park   Forest Hill   Hither Green  
Lewisham   Sunfields   Upper Norwood   Wesley Hall**



Dear Friends,

I hope you are keeping well. It is so good to bring you the updates on Living Hope School. The children have settled in after their summer holiday and they are all doing well.

Up till this point, we have not had a sufficient outdoor space for physical sports and other activities. The exciting news is that we hope to have an outdoor space to facilitate this but also to provide an extra learning space for the hot summer months. Incredibly, after some fund-raising and your continued financial support, we have been able to purchase a small piece of land (708 Square Meters) to provide an exciting and engaging outdoor learning environment for our students to flourish. We hope that this space will be ready by next summer; equipped with a gardening space and playing equipment. We will plant fast-growing trees for shelter and build canopies for outdoor classes. This will make it a suitable place all year round but especially for the later spring and summer months, which is when it gets really hot. During these months our usual classrooms are not ideal for learning especially when we have an unreliable supply of electricity to run cooling fans. Our solar panels cannot cope with the demand of having fans on in all the classes without the help of the main supply of electricity.

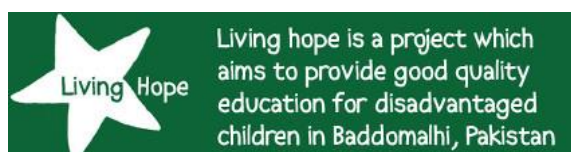
With these facilities in place, the students will be able to continue their learning in their open-air space. This will be an exciting new addition to our school facilities. The children are very excited and are looking forward to their new place.

Living Hope is aiming to raise an extra £7000 to get the space ready and to be able to buy the outdoor equipment. As I am writing this letter, we are getting trucks full of landfill soil delivered! Living Hope school is very grateful to Andrew, Valery and our Anerley Methodist Church friends for raising £365 through afternoon teas. This money has already gone to help with the extension.

Please also remember to pray for our teachers, students and their families. Thank you for your support!

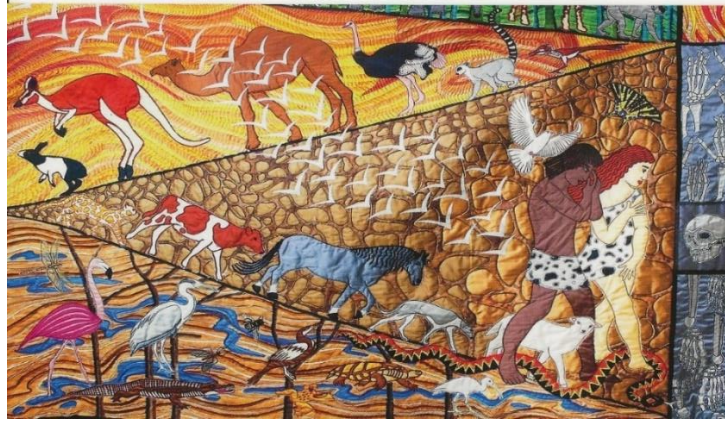
**God bless, Rev Imran Malik,**

**10 Portland Road. Hawkhead Road, Paisley PA2 7GH**



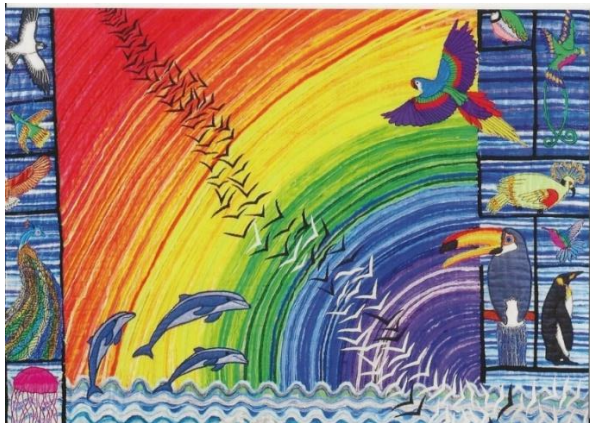
**Anerley Burnt Ash Eltham Park Forest Hill Hither Green  
Lewisham Sunfields Upper Norwood Wesley Hall**

## Threads through Creation



### About the artist

Jacqui Parkinson was born in Manchester, and lived in London for many years. She taught drama and then ran an arts centre. Discovering a love for stitching at a textile workshop changed her life: she went on to take a degree in Embroidered Textiles, and start a career in textile art. From 2004-2011, she produced eleven small exhibitions for the Deo Gloria Trust. These toured most of the cathedrals of England. Moving to Devon in 2009, she began work on a very large scale, with 'Threads through Revelation', probably the largest ever textile art project by a single person. It toured cathedrals 2016-18; 'Threads through Creation' toured 2021-4: it is planned to tour 'Threads through the Cross', her last huge project, together with the other two, as 'Threads through the Bible' from 2025.



### Supporting spectacular work

Jacqui's work is supported by a charity, New Creations. It depends on private donations and prayerful support. For further information, please visit [www.bible-threads.com](http://www.bible-threads.com). There is also an online shop for books, prints and artwork.

This dramatic exhibition by textile artist Jacquie Parkinson consists of twelve huge silk panels retelling the creation story from the first pages of the first book in the

**Anerley Burnt Ash Eltham Park Forest Hill Hither Green  
Lewisham Sunfields Upper Norwood Wesley Hall**

bible, Genesis. It took nearly three years to complete, and eight million stitches. Touring cathedrals and great churches between 2021 and 2024, 'Threads through Creation' then is scheduled to be part one of another, even larger project. 'Threads through the Bible' will also include 'Threads through the Cross' and 'Threads through Revelation', all in all 44 huge panels, one of the largest ever textile art projects. It is planned to tour cathedrals from 2025.

For more information, touring details, and publications and artwork for sale, visit [www.bible-threads.com](http://www.bible-threads.com)

### **2025 Exhibition Dates**

#### **Threads through the Bible | Creation + Cross + Revelation**

16th January – 3rd March – LIVERPOOL CATHEDRAL

7th March – 5th May – SOUTHWELL MINISTER

9th May – 30th June – ELY CATHEDRAL

#### **Threads through the Cross**

3rd July – 4th August – RIPON CATHEDRAL

7th August – 22nd September – SHEFFIELD CATHEDRAL

25th September – 3rd November – GUILDFORD CATHEDRAL

### **2026 & 2027 Exhibition Dates**

#### **Threads through the Bible | Creation + Cross + Revelation**

TBC January – 2nd March – BATH ABBEY + ST MICHAELS + ST SWITHENS

9th May – 29th June – CHESTER CATHEDRAL

4th July – 31st August – LINCOLN CATHEDRAL

[www.bible-threads.com](http://www.bible-threads.com)

### **Women Emulating Susanna Wesley (WESUW)**

Meetings on the fourth Saturday of the month

at Upper Norwood Methodist Church,

11am-1pm; 28<sup>th</sup> December 2024; 25<sup>th</sup> January 2025; 22<sup>nd</sup> February 2025

*All are Welcome*

**Circuit website:** [bhcpmethodist.org.uk](http://bhcpmethodist.org.uk)

Deadline for information for next newsletter: 20<sup>th</sup> February 2025

Please email details to: [office.bcpc@btinternet.com](mailto:office.bcpc@btinternet.com)

**Anerley Burnt Ash Eltham Park Forest Hill Hither Green  
Lewisham Sunfields Upper Norwood Wesley Hall**

	<b>Circuit Forthcoming Events</b>	
Weekly	Thursday morning zoom Bible Study led by Mrs Margaret Boreham: All are welcome	10am-11am
Wed. 27 <sup>th</sup> Nov.	Circuit Advent Study session 1: 'A World in Turmoil' led by Rev. Richard Grocott	7.30pm via zoom
Wed. 4 <sup>th</sup> Dec.	Circuit Advent Study session 2: 'Preparing the Road' led by Rev. Charles ILunga	7.30pm via zoom
Wed. 4 <sup>th</sup> Dec	Advent study at Burnt Ash led by Rev Craig Gaffney	10.15am
Thurs. 5 <sup>th</sup> Dec	Advent study at Sunfields led by Rev Craig Gaffney	7.30pm
Wed. 11 <sup>th</sup> Dec	Advent study at Burnt Ash led by Rev Craig Gaffney	10.15am
Wed. 11 <sup>th</sup> Dec.	Circuit Advent Study session 3: 'The life Required' led by Rev. William Davis	7.30pm via zoom
Thurs. 12 <sup>th</sup> Dec	Advent study at Sunfields led by Rev Craig Gaffney	7.30pm
Sun. 15 <sup>th</sup> Dec.	Circuit Youth Event at Hither Green Methodist Church	5pm-6.30pm
Tue. 17 <sup>th</sup> Dec	Advent study at Hither Green led by Rev Craig Gaffney	10.15am
Wed. 18 <sup>th</sup> Dec	Advent study at Burnt Ash led by Rev Craig Gaffney	10.15am
Wed. 18 <sup>th</sup> Dec.	Circuit Advent Study session 4: 'God's Servants' led by Rev. Craig Gaffney	7.30pm via zoom
Thurs. 19 <sup>th</sup> Dec	Advent study at Sunfields led by Rev Craig Gaffney	7.30pm
Fri. 20 <sup>th</sup> Dec.	Carol singing at the 'Eltham GPO' pub, 4 Passey Place, Eltham SE9 5DQ	6pm
Sat. 21 <sup>st</sup> Dec.	Outdoor Community Carols at Hither Green Methodist Church	4.30-5.30pm
Sun. 22 <sup>nd</sup> Dec.	'Blue Christmas' Service at Hither Green Methodist Church, led by Rev. Craig Gaffney	5pm
Mon. 23 <sup>rd</sup> Dec.	'Carols at The Crown', The Crown Tavern, 117 Burnt Ash Hill, Lee, SE12	7.30pm
Tue. 31 <sup>st</sup> Dec.	Watchnight Service at Lewisham Methodist Church, led by Rev. Charles ILunga	11.15pm- midnight
Sat. 18 <sup>th</sup> -25 <sup>th</sup> Jan.	Week of Prayer for Christian Unity	
Thurs. 30 <sup>th</sup> Jan.	CLT meeting at Burnt Ash Methodist Church	7.30pm
Thurs. 20 <sup>th</sup> Feb.	LP & WL meeting at via zoom	7.30pm
Sat. 22 <sup>nd</sup> Feb.	'Mad Hatters Tea Party' with Palm Court Trio, Burnt Ash Methodist Church	3pm-5pm
Thurs. 27 <sup>th</sup> Feb.	Circuit Meeting at Burnt Ash Methodist Church	7.30pm

**Anerley Burnt Ash Eltham Park Forest Hill Hither Green  
Lewisham Sunfields Upper Norwood Wesley Hall**

# CHRISTMAS SERVICES AROUND THE CIRCUIT



## Carol Services

### Sunday 15<sup>th</sup> December

- 10.30am** Sunfields led by Rev. Craig Gaffney  
**4pm** Eltham Park led by Rev. Richard Grocott  
**6pm** Joint service Anerley/Upper Norwood at Anerley led by Rev. William Davis

### Sunday 22<sup>nd</sup> December

- 10.30am** Hither Green led by Rev. Craig Gaffney  
**10.30am** Burnt Ash led by Dr Linda Ryan  
**10.30am** Lewisham led by Annie Mokgohloa  
**11am** Wesley Hall by Rev Charles ILunga  
**5pm** Forest Hill led by Rev Charles Ilunga



## Blue Christmas



### Sunday 22<sup>nd</sup> December

- 5pm** Hither Green led by Rev. Craig Gaffney



## Nativity Service



### Tuesday 24<sup>th</sup> December

- 4pm** Eltham Park led by Rev. Richard Grocott



## Christingle Services



### Sunday 8<sup>th</sup> December

- 10.30am** Eltham Park led by Rev. Richard Grocott

### Sunday 24<sup>th</sup> December

- 9pm** Burnt Ash led by Rev. Craig Gaffney



## Watchnight Service



### Saturday 31<sup>st</sup> December

- 11.15pm-midnight** Lewisham led by Rev. Charles ILunga

**Anerley Burnt Ash Eltham Park Forest Hill Hither Green  
Lewisham Sunfields Upper Norwood Wesley Hall**